

District: Smyrna School District

Telephone: (302) 653-8587

Address: 510 West Main Street, Clayton DE 19938

Web: ces.smyrna.k12.de.us

Principal: Mike Dulin

AYP: Above Target

School Rating: Superior



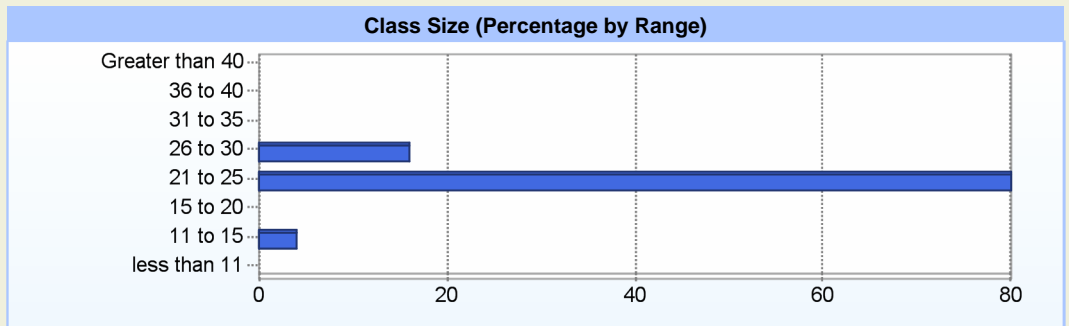
School Demographics

Fall Enrollment		
	2007	2008
Kindergarten	85	87
Grade 1	114	122
Grade 2	82	116
Grade 3	98	88
Grade 4	97	113
Total	476	526

Enrollment by Race/Ethnicity		
	2007	2008
American Indian	0.2%	0.2%
African American	12.2%	15.2%
Asian American	0.6%	1.0%
Hispanic	3.6%	4.9%
White	83.4%	78.7%

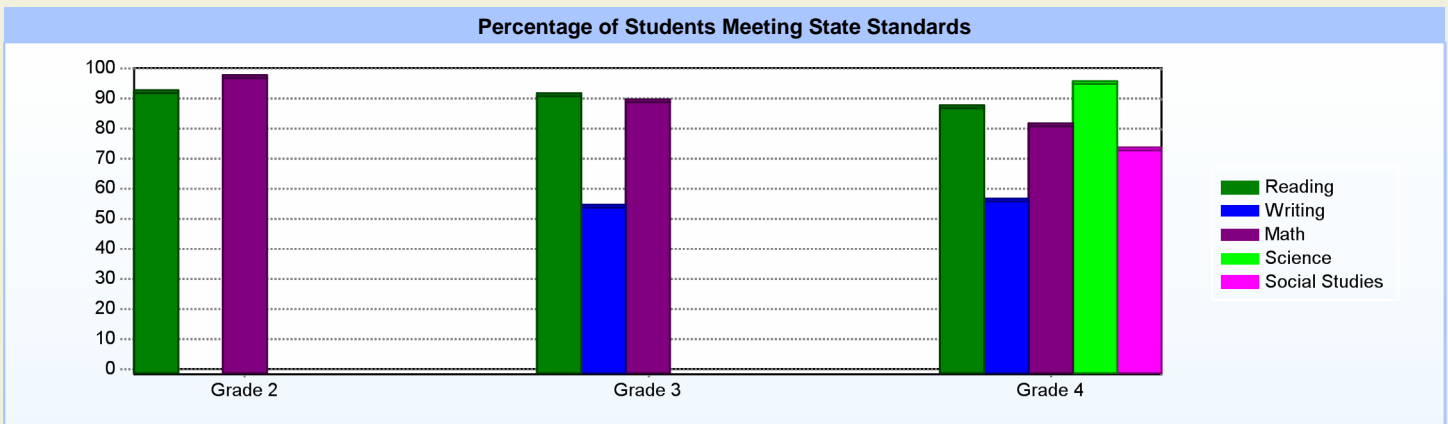
Other Student Characteristics		
	2007	2008
English Language Learner	1.5%	2.7%
Low Income	20.4%	26.2%
Special Education	11.1%	9.3%
Enrolled for Full Year	96.2%	97.5%

School Promotion by Grade	
	2007
Kindergarten	98.8
Grade 1	96.5
Grade 2	98.8
Grade 3	98.0
Grade 4	99.0



* Elementary and special schools provide their own class size data

Student Achievement



Exemplary Programs

Clayton Elementary has an exemplary staff that is dedicated to providing our students with the best possible education, while providing a fun and stress free environment. The following programs are offered at Clayton Elementary: After School Tutoring, Title 1 Reading and Math, Student Enrichment Program, Winter and Spring Music Programs, Red and White Field Day, Accelerated Reading, Accelerated Math, After School Cheerleading, Spelling Bee, Family Fun Nights, Cookies with Santa, Fall Festival, May Fair, Book Fairs, Halloween Parade, PBS, Mini Society, Bank On It Program, GREAT Program, Bike Rodeo, Seal A Smile, Safety Town, School Health Committee, CESAP Committee, Cool Cats, Thematic Lunches, Breakfast Club, Field Trips, both educational and recreational, Family Reading Nights, Technology Night, and a residential professional storyteller/writer for grade three students.

Student - School Safety and Discipline

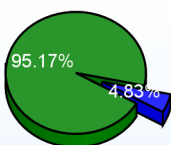
Number of Reported Incidents

	<u>School</u>	<u>District</u>	<u>State</u>
School Crimes (Title 14, Delaware Code, §4112)	3	30	1194
Department of Education (DOE) Offenses	13	144	9663
All School Safety Policy in Place	Yes		

Out-of-School Suspensions and Expulsions

	<u>2008</u>
Number of Suspensions	14
Number of Expulsions	0
Count of Students Suspended/Expelled	13
September 30 Enrollment	526
Percent of Students Suspended/Expelled	2%
District Percentage	11%
State Percentage	13%

Percent Days Present



■ Percent Days Present
■ percent days not present

Our Staff

Number of Instructional Staff

	<u>2008</u>
Teachers	32
Librarians	0
Pupil Support	2
Total	35

Staff by Race/Ethnicity

	<u>2008</u>
American Indian	0.0%
African American	10.8%
Asian American	0.0%
Hispanic	0.0%
White	89.2%

Staffing Ratios

	<u>2008</u>
Students Per Teacher	16
Students Per Administrator	263
Students Per Instructional Staff	14
Students Per Pupil Support Staff	263
School Staff Per Administrator	26

Staff Qualifications

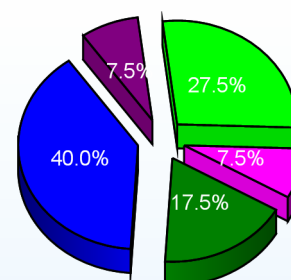
Percentage of Classes Taught by Highly Qualified Teachers

	<u>Classes Taught by HQTs</u>	<u>% Highly Qualified</u>	<u>% Qualified</u>
Elementary General	25	96.0%	0.0%

Education Level

	<u>2008</u>
Percent with Masters Degree and Above	38.1%
Percent Holding National Board for Professional Teaching Standards	2.9%

Years of Teaching Experience



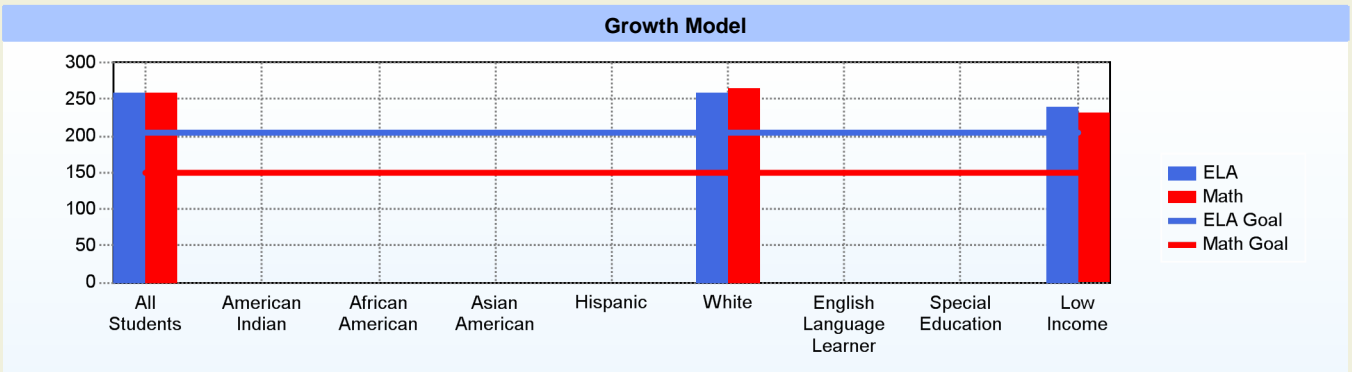
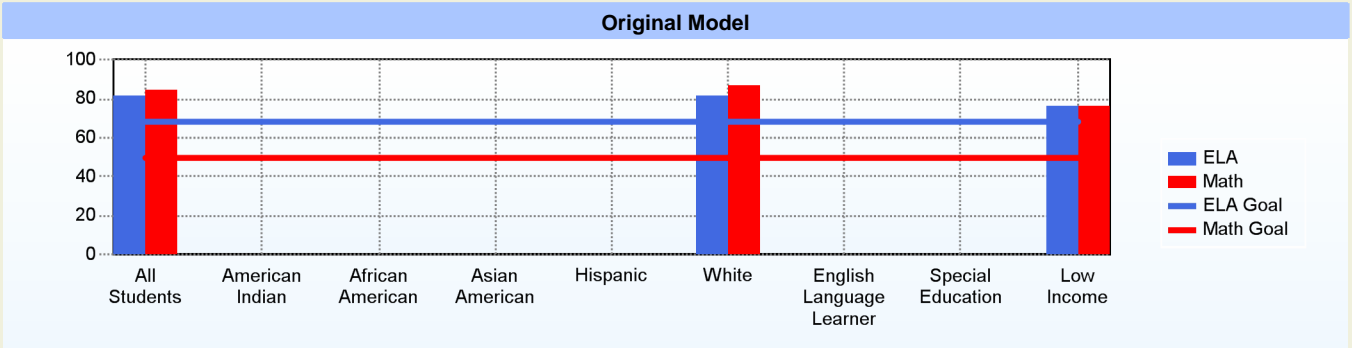
■ Less than 3 years
■ 3 to 9 years
■ 10 to 19 years
■ 20 to 29 years
■ 30 or more years

Curriculum Highlights

Kindergarten through 4th grade students are grouped heterogeneously with a tam class for special education in grades 1 - 4. The curriculum includes the Harcourt Brace Trophies Reading Series, Growing with Math, Smithsonian Science Kits, and the Harcourt Social Studies series. 6 + 1 Traits writing program is used along with the 4 Blocks Model. Art, Music, Physical Education, and Library are the specials offered to every student.

Adequate Yearly Progress (AYP)

* Only groups with greater than 40 students are reported



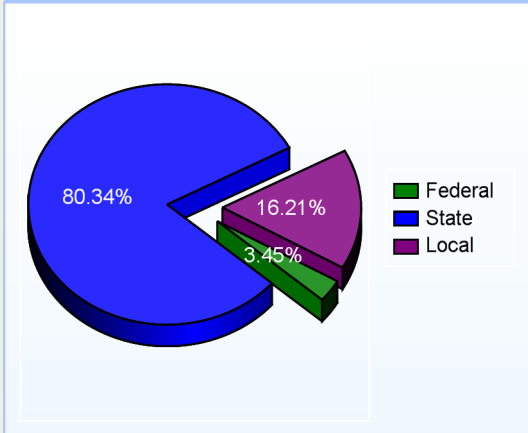
% Test Participation

	<u>ELA</u>	<u>Math</u>	<u>ELA Goal</u>	<u>Math Goal</u>
All Students	100	100	95	95
American Indian	0	0	95	95
African American	100	100	95	95
Asian American	0	0	95	95
Hispanic	0	0	95	95
White	100	100	95	95
English Language Learner	0	0	95	95
Special Education	0	0	95	95
Low Income	100	100	95	95

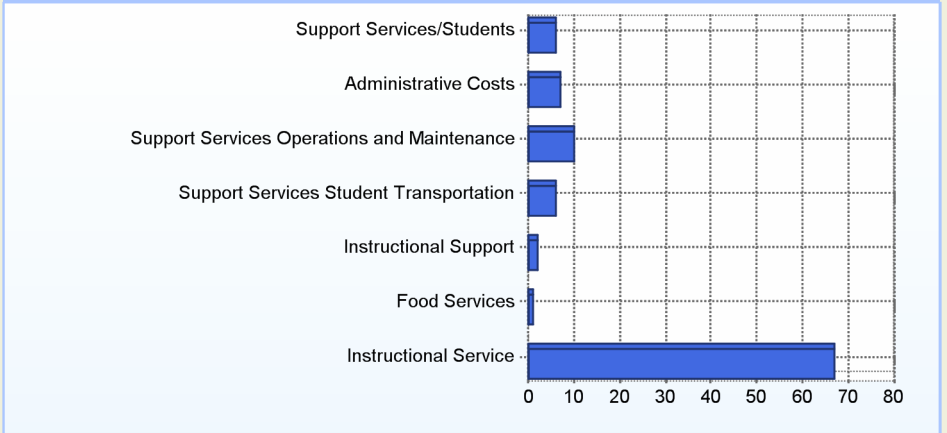
School Finances

District Expenditure per Pupil: \$9,346

District Sources of Revenue



Percent District Allocation of Current Expenses by Category

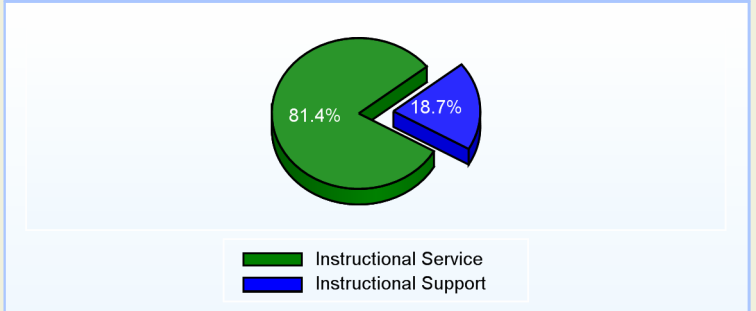


School Salary Allocation

Instructional Service	
2008	
Teachers	70.9%
Librarians	2.0%
Instructional Support	5.2%
Pupil Support	3.3%
Total	81.4%

Instructional Support	
2008	
Administration	7.1%
Secretaries	2.2%
Food Services	3.6%
Maintenance	5.8%
Total	18.7%

Instructional Vs Support



For further information and detailed reports, visit

<http://profiles.doe.k12.de.us>

or contact your local school district office.



Delaware Department of Education

John G. Townsend Building
 401 Federal Street, Suite #2
 Dove, Delaware, 19901 - 3639
 Phone: (302) 735-4000